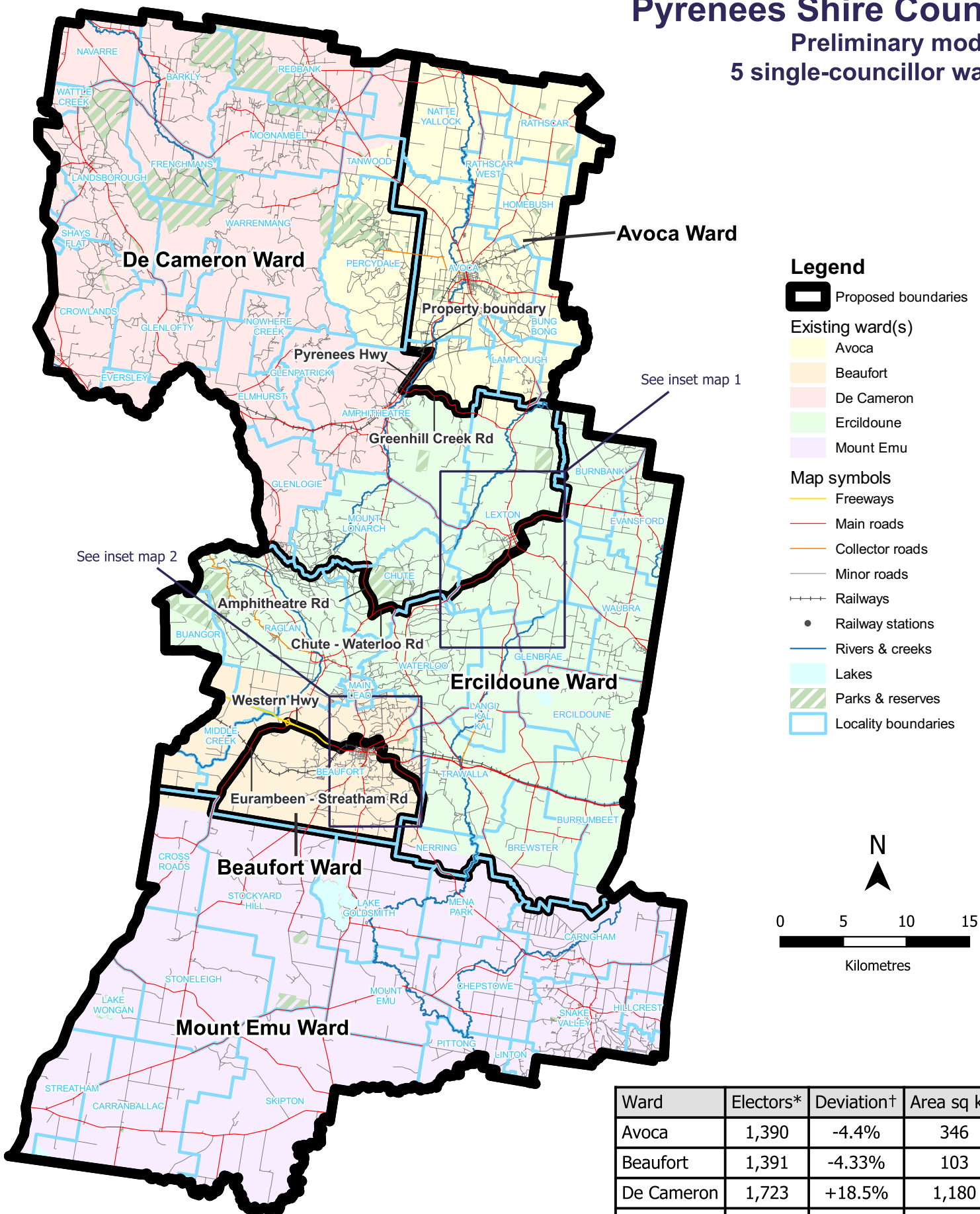


# Pyrenees Shire Council

## Preliminary model 1

### 5 single-councillor wards



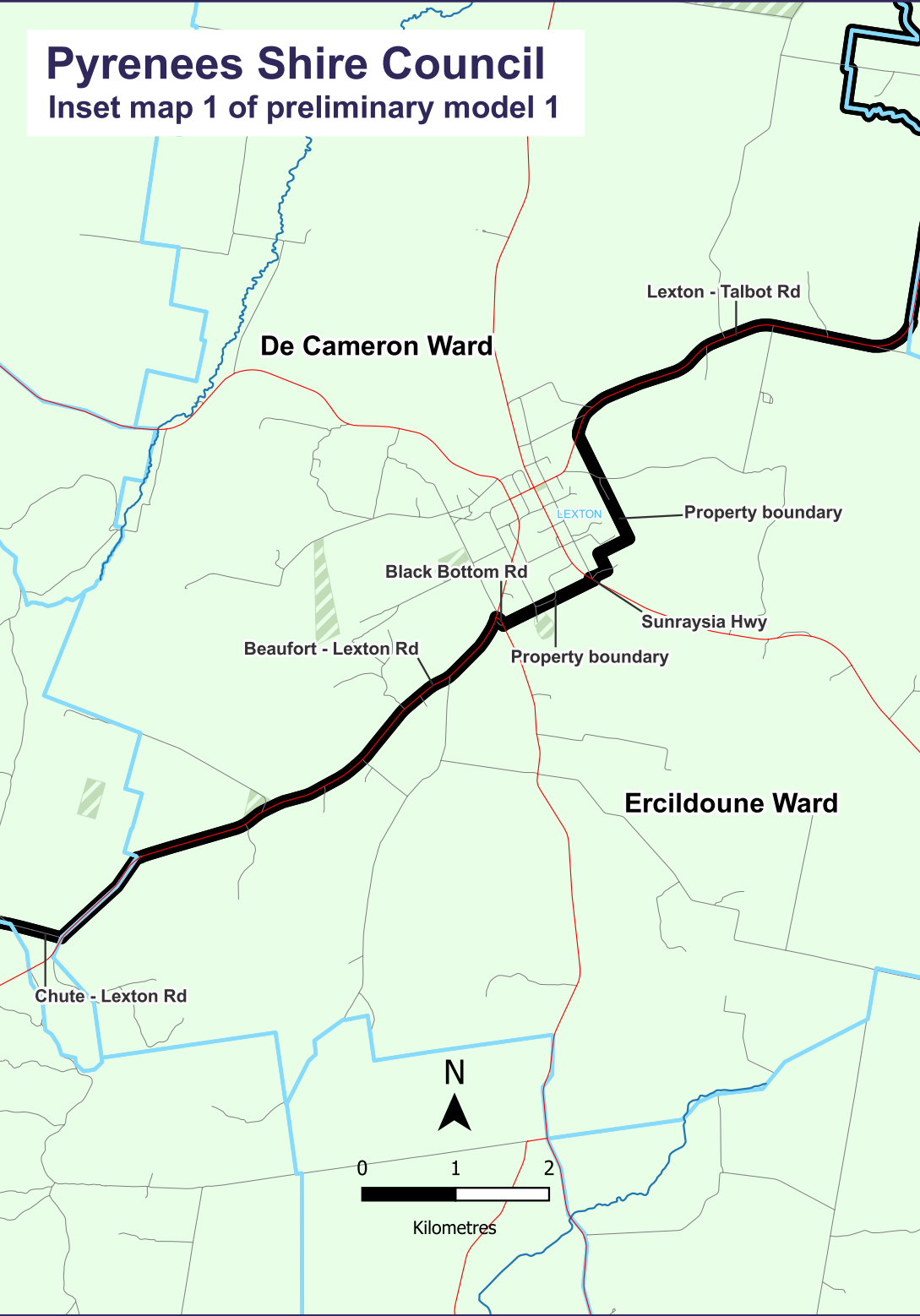
Ward	Electors*	Deviation†	Area sq km
Avoca	1,390	-4.4%	346
Beaufort	1,391	-4.33%	103
De Cameron	1,723	+18.5%	1,180
Ercildoune	1,378	-5.23%	825
Mount Emu	1,388	-4.54%	980
<b>Total</b>	<b>7,270</b>		<b>3,434</b>
<b>Average</b>	<b>1,454</b>		<b>687</b>

\*Elector numbers as at 3 November 2023

†The deviations of all wards are projected to be within +/-10% by the time of the 2024 local government elections.

# Pyrenees Shire Council

## Inset map 1 of preliminary model 1



# Inset map 2 of preliminary model 1

