

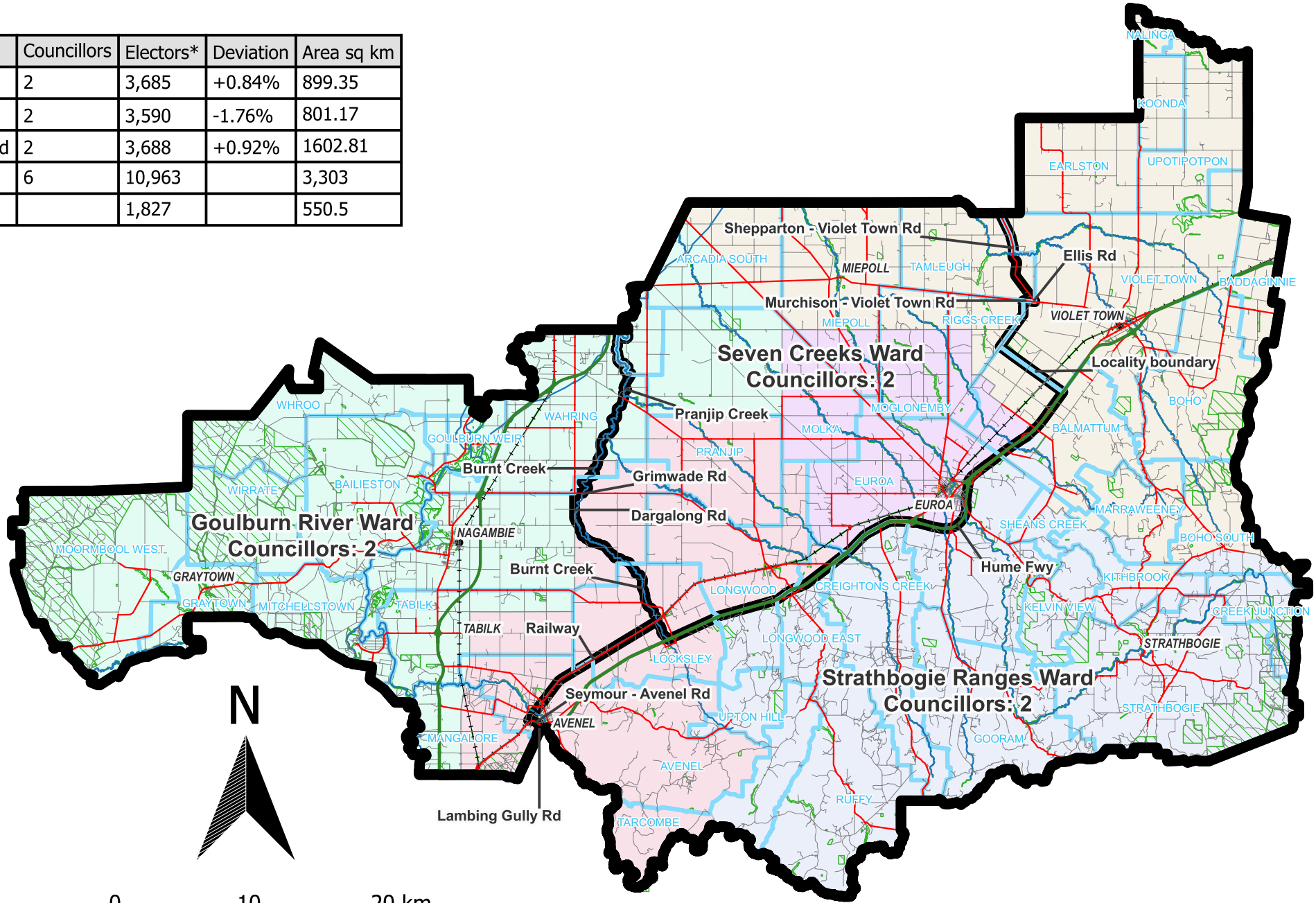
Strathbogie Shire Council

Model 3

| Ward | Councillors | Electors* | Deviation | Area sq km |
|-------------------------|-------------|-----------|-----------|------------|
| Goulburn River Ward | 2 | 3,685 | +0.84% | 899.35 |
| Seven Creeks Ward | 2 | 3,590 | -1.76% | 801.17 |
| Strathbogie Ranges Ward | 2 | 3,688 | +0.92% | 1602.81 |
| Total | 6 | 10,963 | | 3,303 |
| Average | | 1,827 | | 550.5 |

*Elector numbers at 11 Nov 2022

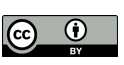
- Legend**
- Proposed Boundaries
 - Existing Wards**
 - Honeysuckle Creek
 - Hughes Creek
 - Lake Nagambie
 - Mount Wombat
 - Seven Creeks
 - Map Symbols**
 - Freeways
 - Main Roads
 - Collector Roads
 - Minor Roads
 - Railways
 - Railway Stations
 - Rivers & Creeks
 - Lakes
 - Parks & Reserves
 - Locality Boundaries



Map prepared by:



Data use:



Copyright © 2023 - State Government of Victoria, Department of Environment, Land, Water and Planning

Disclaimer: This content is provided for information purposes only. While every effort has been made to ensure accuracy and authenticity of the content, the Victorian government does not accept any liability to any person for the information provided.