

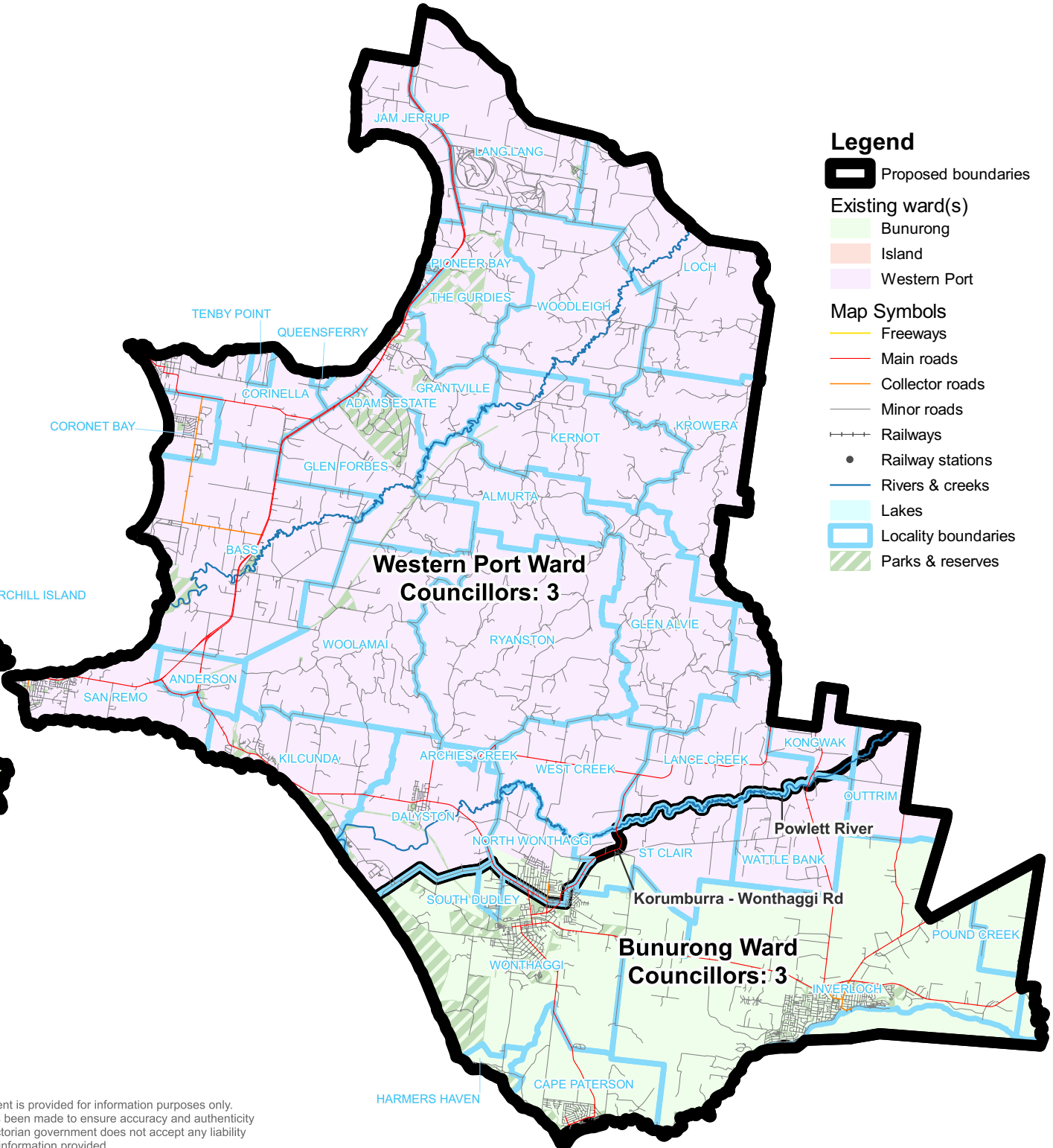
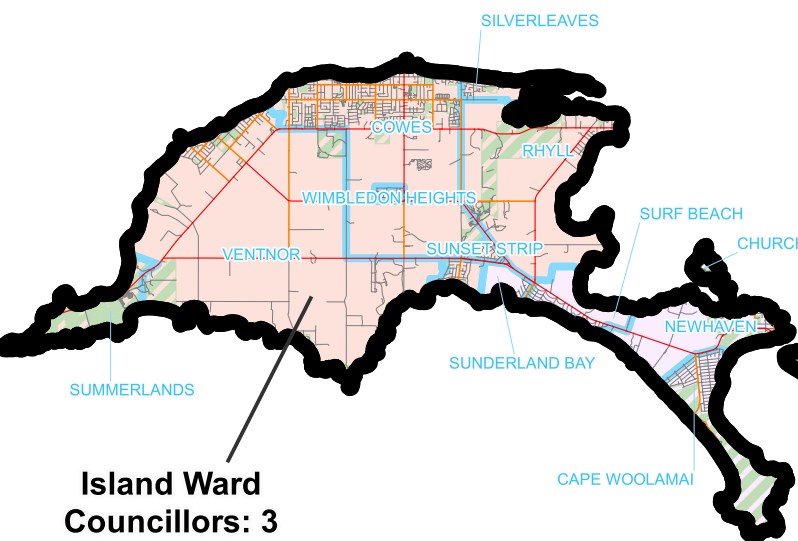
# Bass Coast Shire Council

## Preliminary model 1

Ward	Councillors	Electors*	Deviation†	Area sq km
Bunurong	3	13,115	-4.61%	215
Island	3	15,839	+15.21%	100
Western Port	3	12,291	-10.6%	550
<b>Total</b>	<b>9</b>	<b>41,245</b>		<b>865</b>
<b>Average</b>		<b>13,748</b>		<b>288</b>

\*Elector numbers as at 3 November 2023

†The deviations of all wards are projected to be within +/-10% by the time of the 2024 local government elections.



### Legend

- Proposed boundaries
- Existing ward(s)**
  - Bunurong
  - Island
  - Western Port
- Map Symbols**
  - Freeways
  - Main roads
  - Collector roads
  - Minor roads
  - Railways
  - Railway stations
  - Rivers & creeks
  - Lakes
  - Locality boundaries
  - Parks & reserves

