

Disability education and engagement plan

2025 to 2027

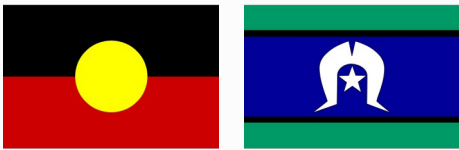
Easy Read version



What is in this plan

Acknowledgement of Country	3
About our plan	5
About the Victorian Electoral Commission	7
How we made our plan	10
What we want to make better	13
How we will make things better	14
How we will know if our plan is working	20
Contact information	22

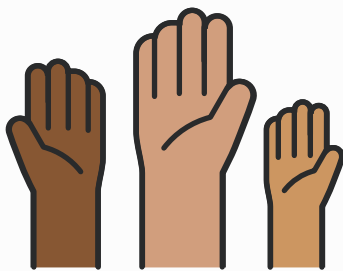
Acknowledgement of Country



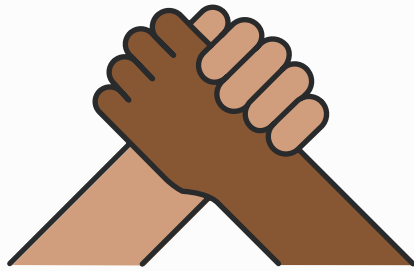
We acknowledge that Aboriginal and Torres Strait Islander peoples are the first to care for Country.



Country is the land we work on.



We celebrate Aboriginal and Torres Strait Islander peoples' important role in the community.



We respect Aboriginal and Torres Strait Islander peoples':

- history
- culture
- past and present Elders.



Respect means we celebrate Aboriginal and Torres Strait Islander peoples' strong connection to the land, water, and sea.

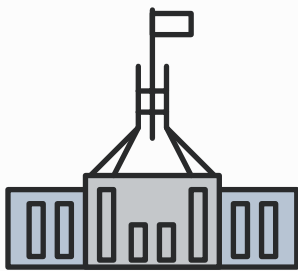


Elders know a lot about culture and history and are very important to the community.

About our plan



This plan is from the Victorian Electoral Commission.



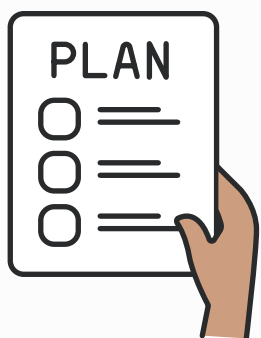
We help people in Victoria vote.



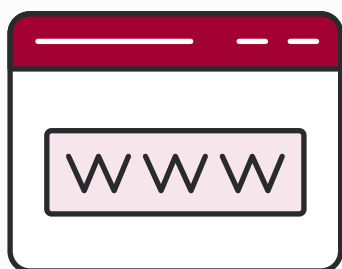
We wrote this plan to tell you about how we want to make things better for people with disability in Victoria.



This is an Easy Read summary.
Summary means we only include
our most important ideas.



When we write our plan, we mean our
Disability education and engagement plan.

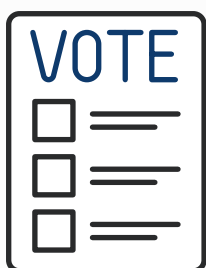


You can read the full version of
our plan on [our website](#).



You can also find our contact information
on page 22 at the end of our plan.

About the Victorian Electoral Commission



We hold local council elections
and state elections in Victoria.
Elections are where people vote.



When you vote, you help choose
who is part of government.

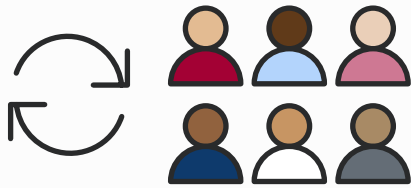


In Australia, people get to vote because
everyone is part of a democracy. This means
you get to help decide how things happen.



We also do other important activities, like:

- keep a list of all the people who vote in elections in Victoria
- help people in Victoria know how, when, and where to vote
- make sure people follow the law during an election.



We care about the work we do.

We make sure we improve what we do for the community.



To improve, we work with 5 groups that represent people who might need extra help to be part of our democracy.

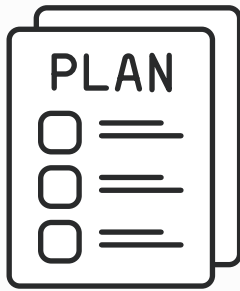
The 5 groups we work with are:

- the Aboriginal Advisory Group
- the Electoral Access Advisory Group
- the Prisons and Without a Home Advisory Group
- the Young People Advisory Group
- the Culturally and Linguistically Diverse Advisory Group.

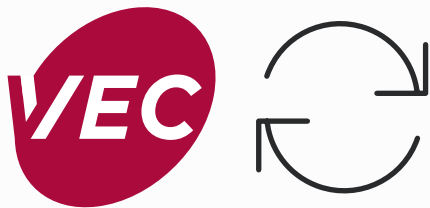


These groups help us understand what people need and want.

How we made our plan



To make our plan, we looked at 2 other plans.



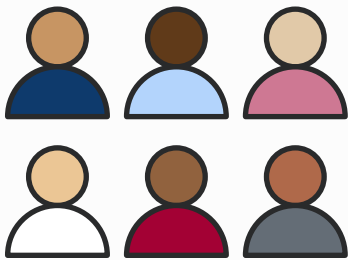
These other plans talked about what we want to change about the work we do.



One of the plans we looked at talks about how we work for the community.



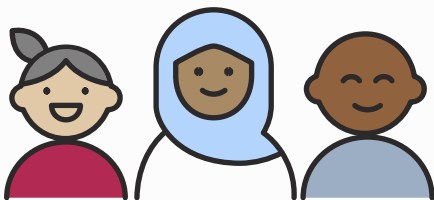
The other plan we looked at talks about how we want to make our workplace more inclusive, accessible and diverse.



Inclusive means everyone is welcome and can take part.



Accessible means everyone can use something or go somewhere.



Diverse means people are different from each other.



We got feedback about the problems people with disability might have.



Feedback is when people tell us what they think about a topic.



We learnt new things from the feedback.

What we want to make better



We want to make democracy accessible to everyone, including people with disability.



We want to give support to make sure everyone is a part of our democracy.

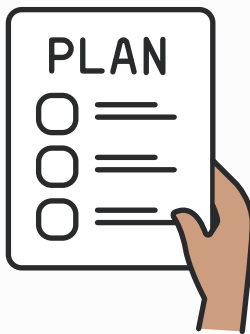


We want to remove barriers for people with disability. Barriers are things that make it hard for people to take part.

How we will make things better



We have some goals to make things better.



The goals of our plan are to:

- think about people with disability when we plan elections
- have more chance for people with disability to enrol, vote, and be part of our democracy.



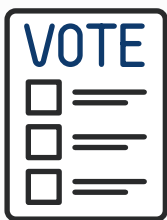
We have 3 things we want to focus on to get our goals done:

- access
- knowledge and confidence
- relationships, visibility, and representation.

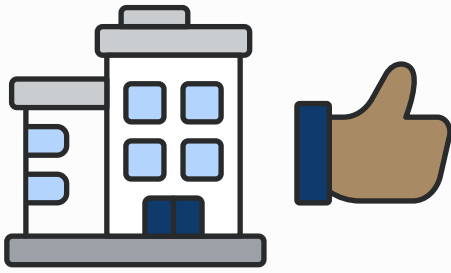
Access



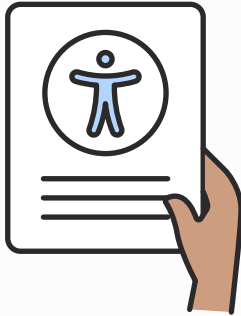
This means our democracy is accessible to everyone.



We will make sure voting is accessible. For example, we will find ways for everyone to be able to enrol to vote.



We will also make sure voting centres are easier to use.



We will remove barriers for carers, parents or our workers to help people with disability. For example, we will make access keys for our offices and some voting centres.



Knowledge and confidence

This means people know more about elections and understand our democracy.



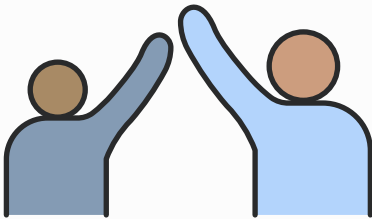
We will make sure people with disability get better information about our democracy.



We will make resources available to learn about elections.



We will work to make sure people with disability feel confident to be part of our democracy.



We will work with people that have lived experience of disability to represent us.

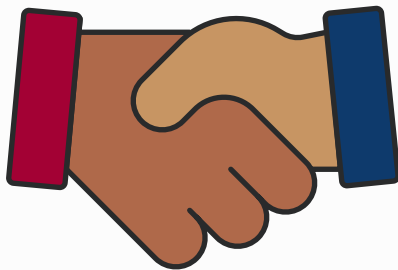


Represent means speak for the Victorian Electoral Commission. For example, teach students with disability about elections.

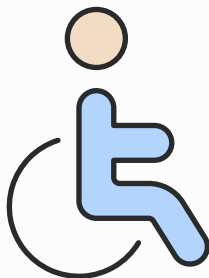


Relationships, visibility, and representation

This means we will work together with people with disability to make sure they get the support they need.



We want to make sure our relationship with people with disability is strong.

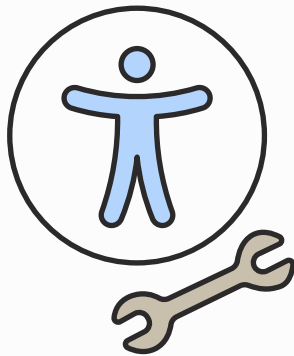


We will work closely with disability service providers.



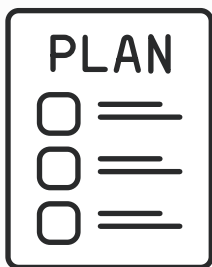
We will make sure people with disability feel included in everything. For example, we will:

- get advice from groups who represent people with disability about how to give support
- show more people with disability in media or advertising.



We will also work out how to fix any problems with accessibility.

How we will know if our plan is working



Our leaders will do their best to make sure our plan works.

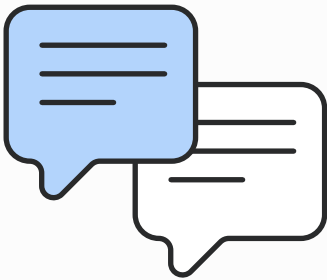


We will know our plan is working if more people with disability:

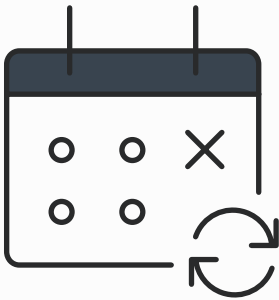
- want to vote
- vote
- feel supported
- represent us
- share information about our services for people with disability.



We will know more about how our plan is working when we get more information about people with disability.

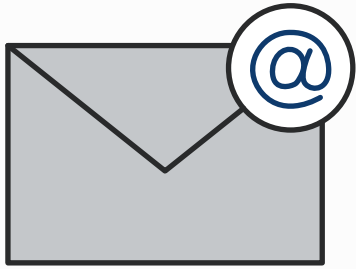


More information will help us know what we need to improve on or change.



Every year we will make a report about how our plan is working.

Contact information



Email

info@vec.vic.gov.au

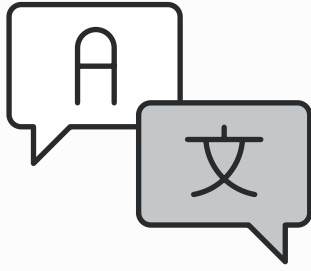


Call

131 832

We will answer the phone between 8:30 am and 5 pm local time. We are in Melbourne.

If you are outside Victoria, you can call us on 03 8620 1100.



Use the Translating and Interpreting Service (TIS)

Call 131 450 and ask to speak to Victorian Electoral Commission on 131 832.



Use the National Relay Service (NRS)

Visit the [National Relay Service](https://www.nationalrelayservice.gov.au) website.

This document (job A12453) was created by Scope (Aust) Ltd. using both licensed and custom images. Cover image is a piece by Monica Lazzari titled “How Many Triangles Can You See” (2015), courtesy of the Artists and Arts Project Australia. Document must not be sold to third parties. The images must not be reused without permission. For more information contact Scope on 1300 472 673 or visit scopeaust.org.au