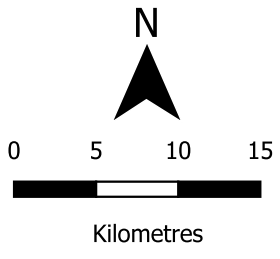


# Wangaratta Rural City Council

## Model 3

### 7 single-councillor wards



See Inset Map

Mount Warby Ward

Ovens River Ward

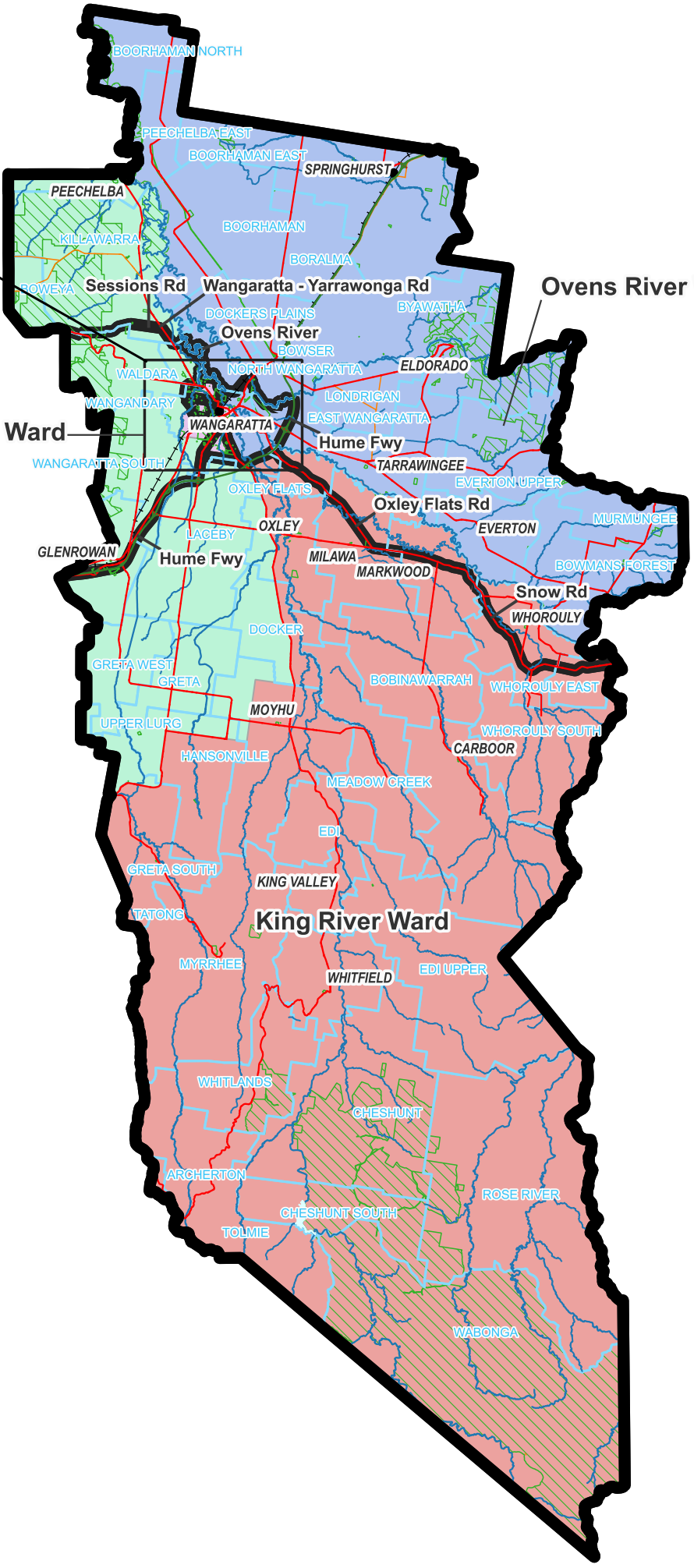
King River Ward

### Legend

- Proposed boundaries
- Existing ward(s)
  - City
  - North
  - South
  - Warby
- Map symbols
  - Freeways
  - Main roads
  - Collector roads
  - Minor roads
  - Railways
  - Railway stations
  - Rivers & creeks
  - Lakes
  - Parks & reserves
  - Locality boundaries

Ward	Electors*	Deviation	Area sq km
Appin	3,562	+4.31%	5
Bullawah	3,507	+2.7%	25
King River	3,512	+2.84%	2,360
Mount Warby	3,096	-9.34%	131
Ovens River	3,259	-4.56%	1,118
Wareena	3,570	+4.54%	2
Yarrunga	3,398	-0.49%	4
Total	23,904		3,646
Average	3,415		521

\*Elector numbers as at 30 March 2023



Map prepared by:



Data use:



Copyright © 2023 - State Government of Victoria, Department of Environment, Land, Water and Planning

Disclaimer: This content is provided for information purposes only. While every effort has been made to ensure accuracy and authenticity of the content, the Victorian government does not accept any liability to any person for the information provided.

# Wangaratta Rural City Council

Inset - Model 3

