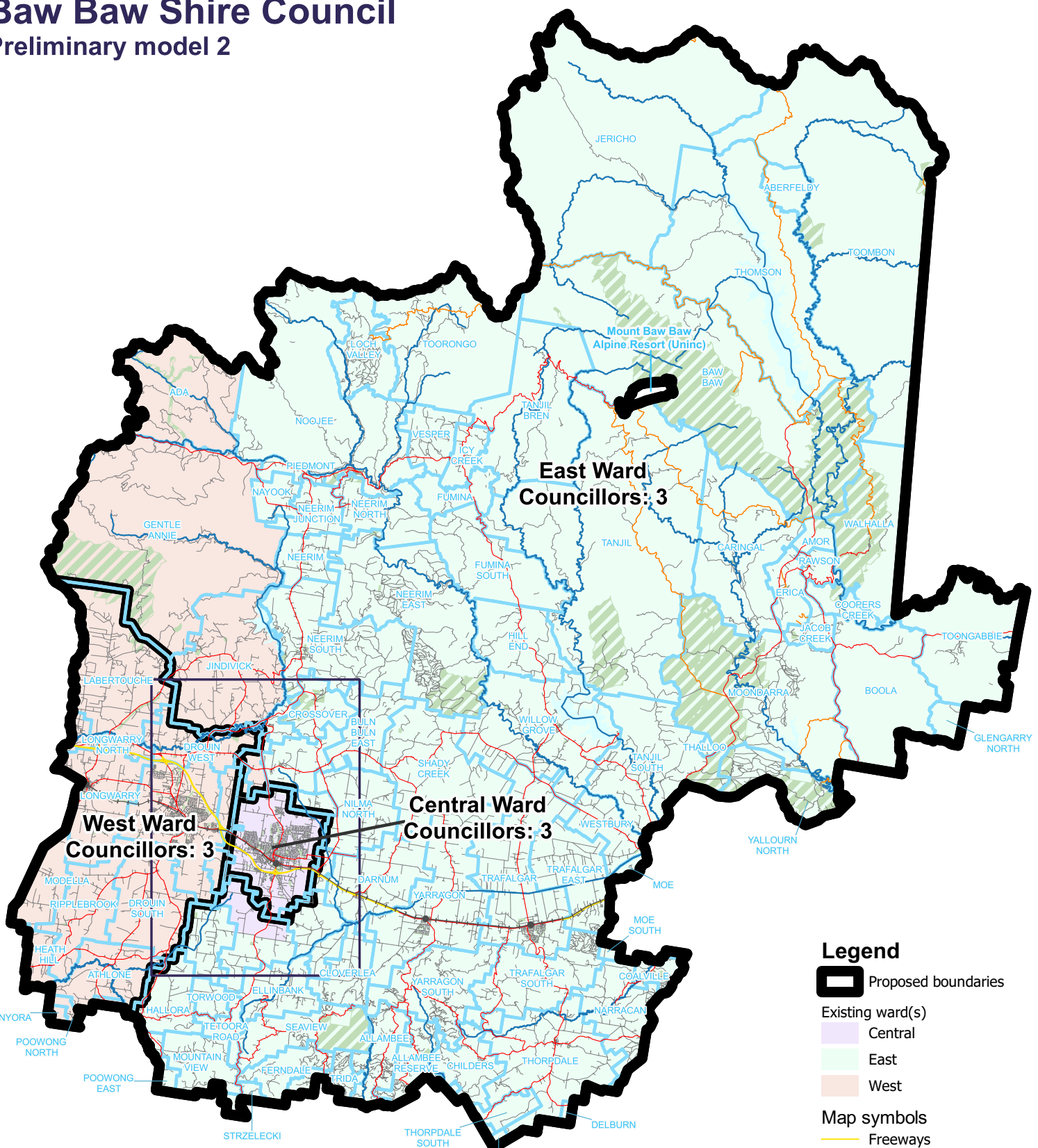


# Baw Baw Shire Council

## Preliminary model 2



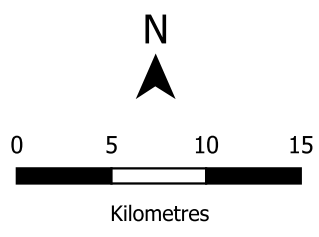
**West Ward  
Councillors: 3**

**East Ward  
Councillors: 3**

**Central Ward  
Councillors: 3**

### Legend

- Proposed boundaries
- Existing ward(s)
  - Central
  - East
  - West
- Map symbols
  - Freeways
  - Main roads
  - Collector roads
  - Minor roads
  - Railways
  - Railway stations
  - Rivers & creeks
  - Lakes
  - Parks & reserves
  - Locality boundaries



Ward	Councillors	Electors*	Deviation†	Area sq km
Central	3	15,536	+1.1%	53
East	3	14,615	-4.89%	3,638
West	3	15,950	+3.79%	337
<b>Total</b>	<b>9</b>	<b>46,101</b>		<b>4,028</b>
<b>Average</b>		<b>15,367</b>		<b>1,343</b>

\*Elector numbers as at 3 November 2023

†The deviations of all wards are projected to be within +/-10% by the time of the 2024 local government elections.

# Baw Baw Shire Council

## Inset map of preliminary model 2

