

Local council ward boundary review

About Bass Coast Shire Council

The Traditional Custodians of land in the Bass Coast Shire area are the Bunurong people.

Bass Coast Shire Council is located about 130 kms south-east of Melbourne. Covering an area of approximately 866 km², the Bass Coast landscape is defined by large areas of rural hinterland and extensive coastal areas.

The council area stretches from Jam Jerup in the north to Phillip Island in the south, with major residential and holiday locations in Wonthaggi, Cape Paterson and Inverloch in the east. The council is bordered by Westernport Bay, Cardinia Shire, South Gippsland Shire and Bass Strait.

In 2022 the population was 41,789, residing in the population centres of Wonthaggi, Cowes, Inverloch, San Remo, Grantville, as well as numerous smaller townships and rural communities.

Bass Coast has a high number of seasonal visitors. The 2021 census reported nearly 40% of homes as unoccupied, with even higher rates recorded for some areas such as Cowes on Phillip Island (at about 50%).

From the 2021 census, 22.7% of residents were born outside Australia with the top responses being, England, New Zealand, Netherlands, Italy, and Scotland. 6.8% of households spoke a language other than English at home.

Current structure

Bass Coast Shire Council is divided into 3 wards with 3 councillors per ward. There are 9 councillors in total.

About the review

If a council is subdivided into wards, the number of voters in each ward should be within +/-10% of the average across all wards to comply with the *Local Government Act 2020* (Vic).

Changes to the population, location of housing areas, and voting entitlements all impact the number of voters in wards.

In accordance with section 17 of the Act, the Minister for Local Government has asked the Victorian Electoral Commission (VEC) to review the ward boundaries for Bass Coast Shire Council.

Adjusting ward boundaries aims to ensure voters are represented equally at the next council general election.

During its review, the VEC will look at Bass Coast Shire Council's:

- enrolled voter numbers
- projected voter numbers
- ward boundary locations.

As a local you know your council area better than anyone. You can have your say on the suggested ward boundary adjustments:

1. in a response submission to the preliminary report
2. at an online public hearing, if you ask to speak in your response submission.

Last review

The VEC conducted an electoral representation review of Bass Coast Shire Council in 2015.

Visit the VEC website at vec.vic.gov.au to access a copy of the 2015 review final report.

Review process

Monday 12 and Tuesday 13 February

Information sessions

Session 1: 12 noon, Monday 12 February

Session 2: 12 noon, Tuesday 13 February

These sessions will give you more information about the review process. You will be able to register for a session on the VEC website.

Wednesday 14 February

Preliminary report

The VEC will release a preliminary report with one or more options for the ward boundaries on Wednesday 14 February.

You can make a response submission from this date.

Wednesday 6 March

Response submissions

The VEC must receive your submission by 5 pm on Wednesday 6 March.

The VEC will not accept late submissions.

Thursday 14 March

Public hearing

The VEC will hold an online public hearing if anyone asks to speak about their response submission at 2 pm Thursday 14 March.

The public hearing will not be held if no one asks to speak.

Wednesday 10 April

Final report

The VEC will submit a final report to the Minister for Local Government including its advice for the adjustments to ward boundaries on Wednesday 10 April.

The minister will consider the VEC's advice regarding the adjustments. Any change is expected to apply at the next local council general election.

Submission guide


You can download a submission guide from the VEC website at vec.vic.gov.au

How to make a submission

 On the VEC website at vec.vic.gov.au

@ By email to:

BassCoast.WardReview@vec.vic.gov.au

 By post to:

Ward boundary review panel
Victorian Electoral Commission
Level 11, 530 Collins St
Melbourne VIC 3000

Submissions must include your:

- full name
- contact phone number or email address
- residential or postal address.

Your submission will be published on the VEC website, including your name and suburb or town but not your full address or contact details. See the submission guide or VEC website at vec.vic.gov.au/privacy for privacy information.

One vote, one value

The 'one vote, one value' democratic principle is enshrined in the *Local Government Act 2020*. This means every person's vote counts equally.

When a local council is subdivided into wards, the number of voters each councillor represents in each ward must be plus-or-minus 10% of the average number of voters per councillor for all wards.

The map below includes the current number of voters in each ward and the ward's current deviation from the average. The VEC will also consider projected population and voter changes to ensure the structure remains fair.

If you make a submission online, you can use a mapping tool to build your preferred ward boundaries. The tool uses current voter numbers to tell you the deviations of the wards you make. This will help your proposal meet the requirements of the Act.

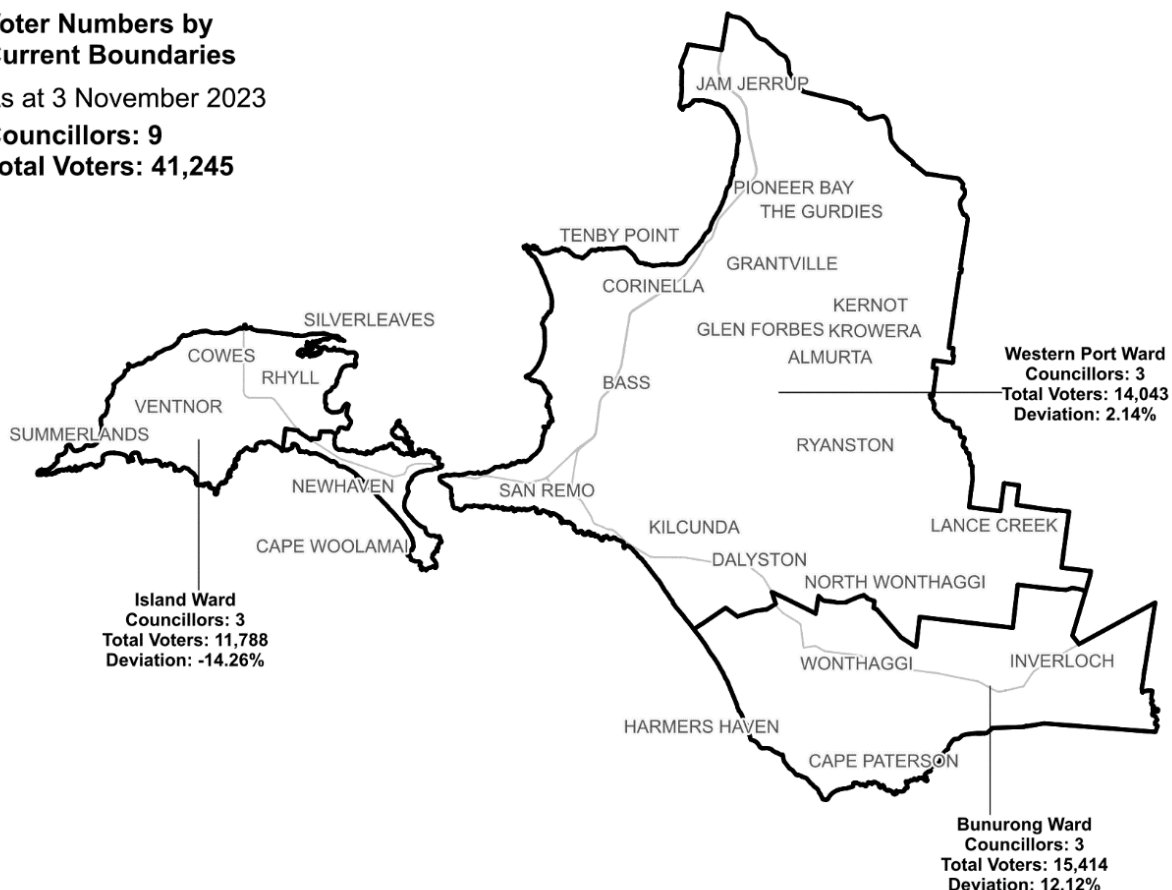
Current electoral structure

Voter Numbers by Current Boundaries

As at 3 November 2023

Councillors: 9

Total Voters: 41,245



Ward	Councillors	Voters	Deviation
Bunurong Ward*	3	15,414	+12.12%
Island Ward*	3	11,788	-14.26%
Western Port Ward	3	14,043	+2.14%

*The deviations of these wards are forecast to be outside of +/-10% by October 2024.

Statistics

Area (km²) 866

Voters

Voters per square km

47.6

Average voters per councillor

4,583

Population

Current population

40,789

Forecast population growth

2.2% p.a.

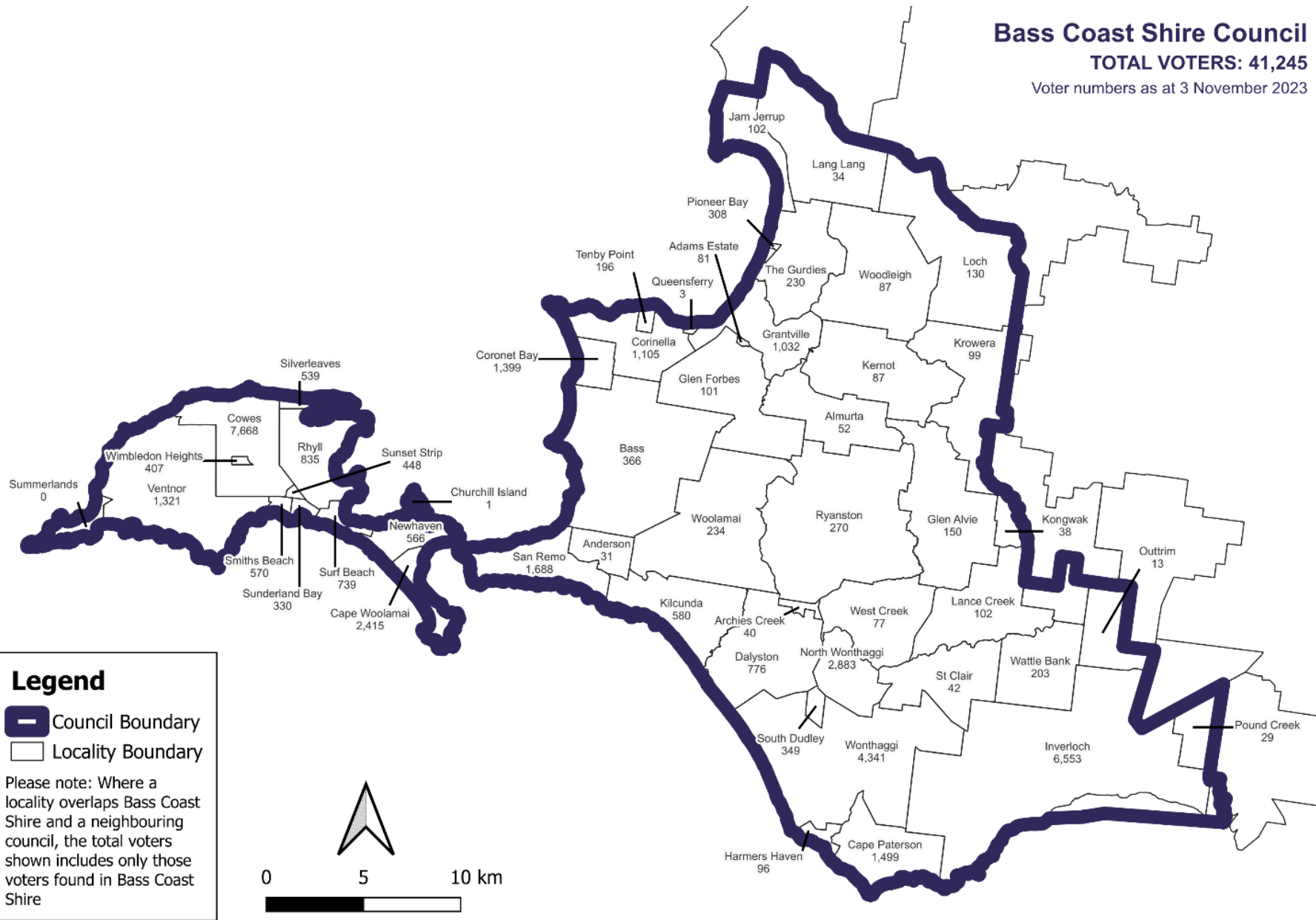
More Census statistics available at abs.gov.au

Voter numbers by locality (map)

Bass Coast Shire Council

TOTAL VOTERS: 41,245

Voter numbers as at 3 November 2023



Voter numbers by locality (table)

Bass Coast Shire Council voter numbers at 3 November 2023

Locality	Voters
Adams Estate	81
Almurta	52
Anderson	31
Archies Creek	40
Bass	366
Cape Paterson	1,499
Cape Woolamai	2,415
Churchill Island	1
Corinella	1,105
Coronet Bay	1,399
Cowes	7,668
Dalyston	776
Glen Alvie	150
Glen Forbes	101
Grantville	1,032
Harmers Haven	96
Inverloch	6,553
Jam Jerup	102
Kernot	87
Kilcunda	580
Kongwak	38
Krowera	99

Locality	Voters
Lance Creek	102
Lang Lang	34
Loch	130
Newhaven	566
North Wonthaggi	2,883
Outtrim	13
Pioneer Bay	308
Pound Creek	29
Queensferry	3
Rhyll	835
Ryanston	270
San Remo	1,688
Silverleaves	539
Smiths Beach	570
South Dudley	349
St Clair	42
Summerlands	0
Sunderland Bay	330
Sunset Strip	448
Surf Beach	739
Tenby Point	196
The Gurdies	230

Locality	Voters
Ventnor	1,321
Venus Bay	0
Wattle Bank	203
West Creek	77
Wimbledon Heights	407
Wonthaggi	4,341
Woolamai	234