

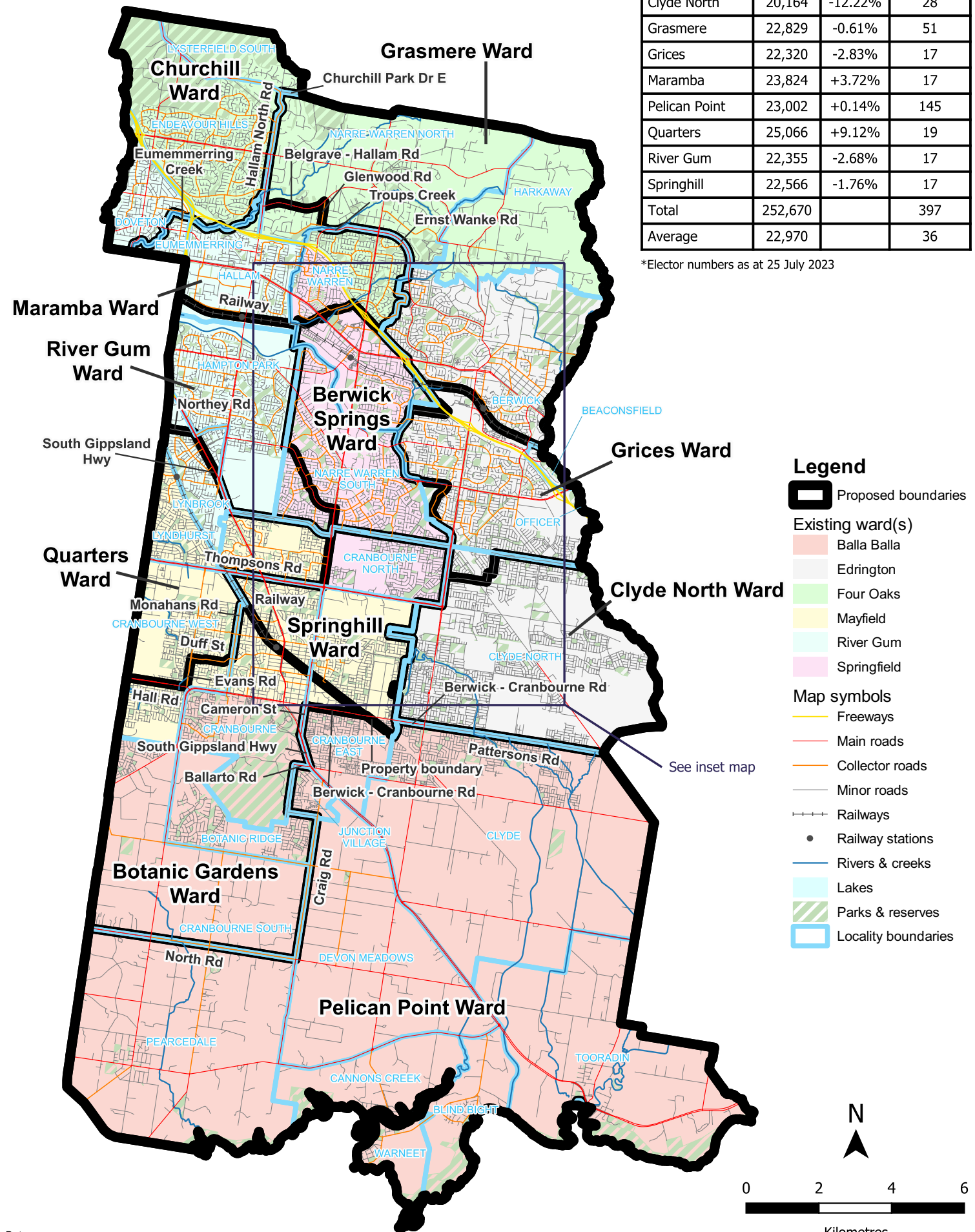
# Casey City Council

## Model 2

### 11 single-councillor wards

Ward	Electors*	Deviation	Area sq km
Berwick Springs	22,632	-1.47%	19
Botanic Gardens	23,234	+1.15%	43
Churchill	24,678	+7.44%	24
Clyde North	20,164	-12.22%	28
Grasmere	22,829	-0.61%	51
Grices	22,320	-2.83%	17
Maramba	23,824	+3.72%	17
Pelican Point	23,002	+0.14%	145
Quarters	25,066	+9.12%	19
River Gum	22,355	-2.68%	17
Springhill	22,566	-1.76%	17
Total	252,670		397
Average	22,970		36

\*Elector numbers as at 25 July 2023



Data use:



Layers for alignment:  
© State of Victoria (Department of Energy, Environment and Climate Action)

Disclaimer: This content is provided for information purposes only. While every effort has been made to ensure accuracy and authenticity of the content, the Victorian government does not accept any liability to any person for the information provided.

Kilometres

# Casey City Council Inset map of model 2

